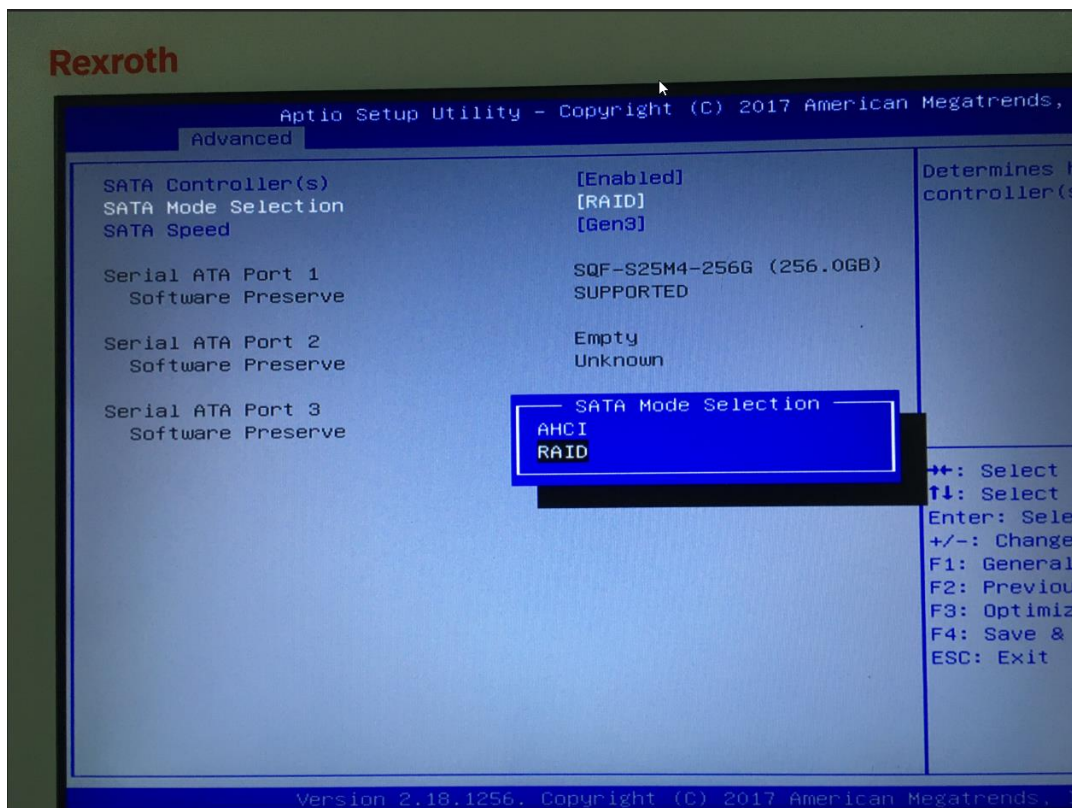


## How to create a RAID1 System on the PR/VR PC's

At first: Be aware that you will lose all data on the SSD. There exist no workaround.

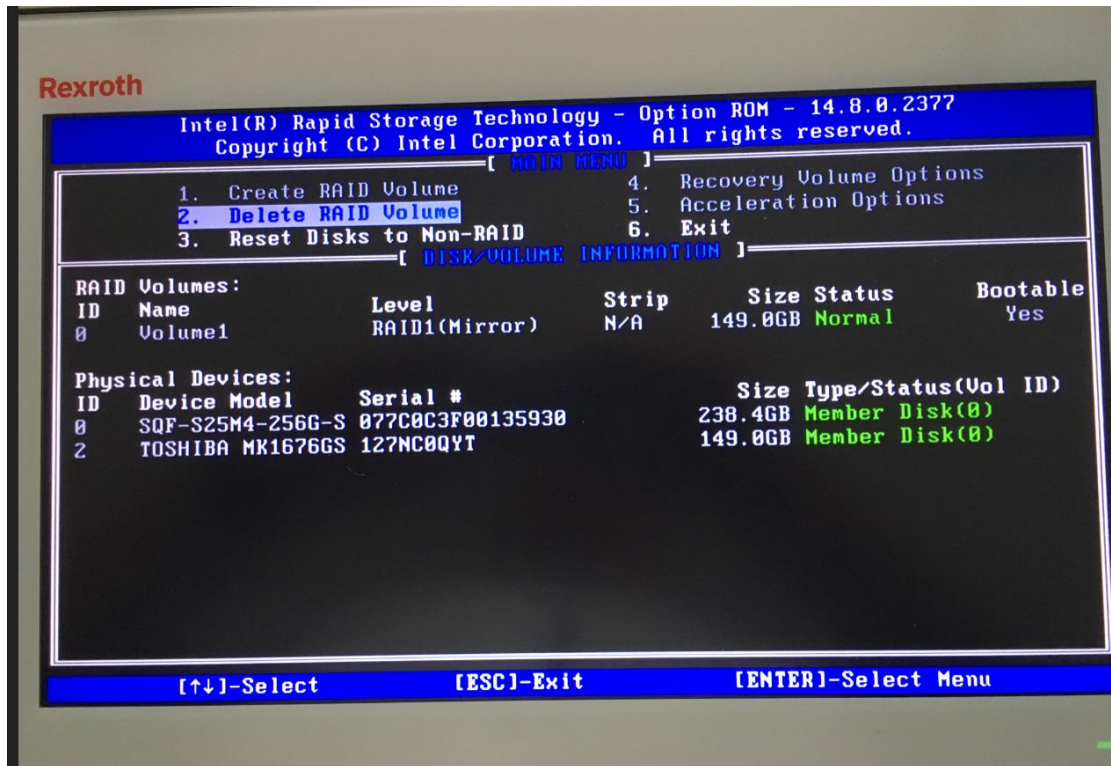
Here are the steps you have to follow

1. Switch off the PC
2. Insert a second HDD/SSD into the empty SATA Slot
3. Reboot the PC and press the "del" key until you are in the BIOS screen
4. Switch to the Advanced menu and change the SATA mode Selection from AHCI to RAID, be aware, that the Software Preserve status is on both SSDs on "SUPPORTED"



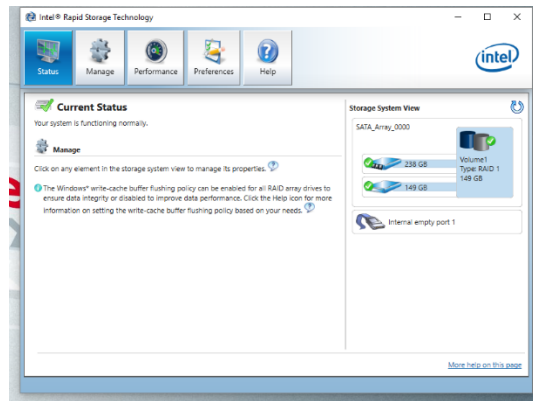
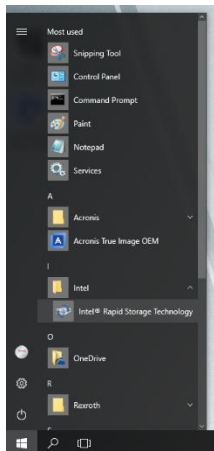
5. Reboot the PC

6. During reboot press <Ctrl><I> at the same time. It will take some time, then the RAID Menu appears



7. Press the number 1 to create a RAID Volume
8. Select RAID1 for mirroring, that means, both SSD's have always the same information
9. Save and Exit this menu
10. Get the recovery stick ready and plug it into one USB Slot
11. The recovery routine will start
12. It will take some time until everything is done, follow the hints on the screen
13. After everything is finished, you can work as usual

14. To check the RAID System while running, you can use the Intel Rapid Storage Technology Software which is always installed on the PR/VR



If you have any questions, do not hesitate to contact me

Peter