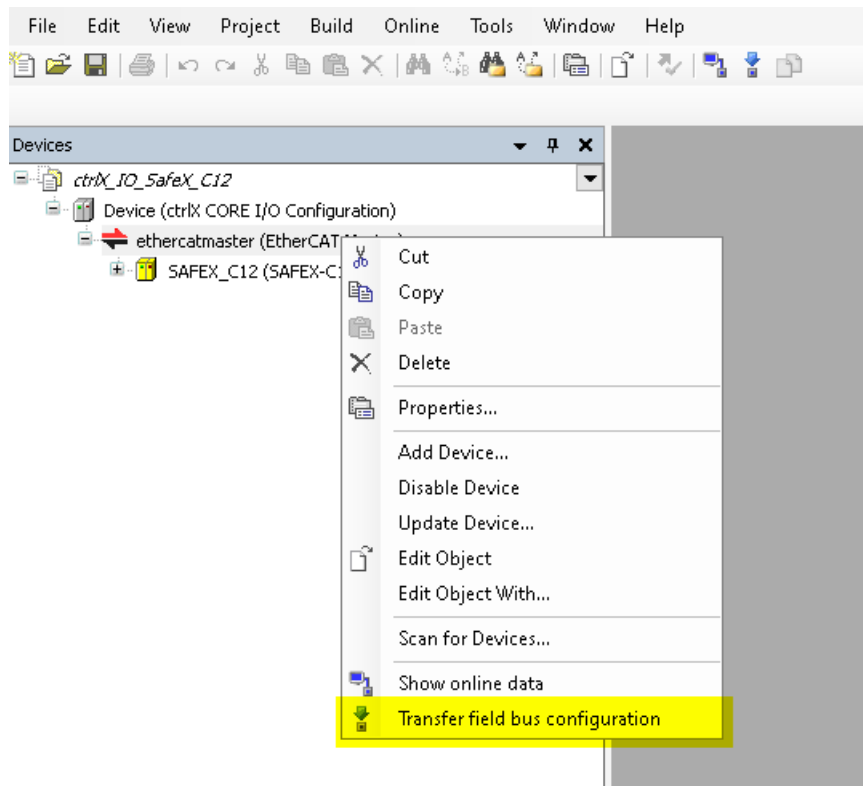
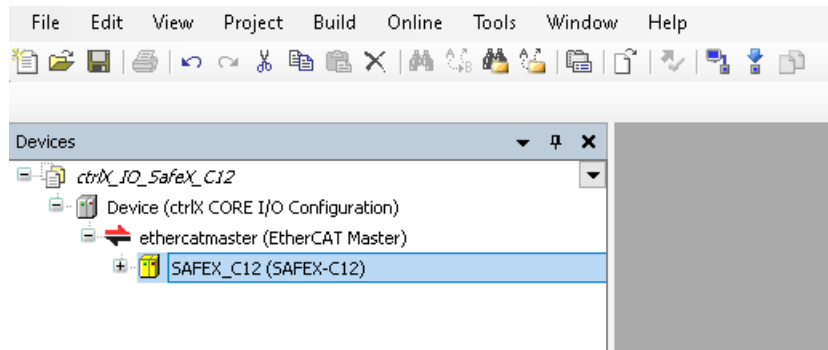
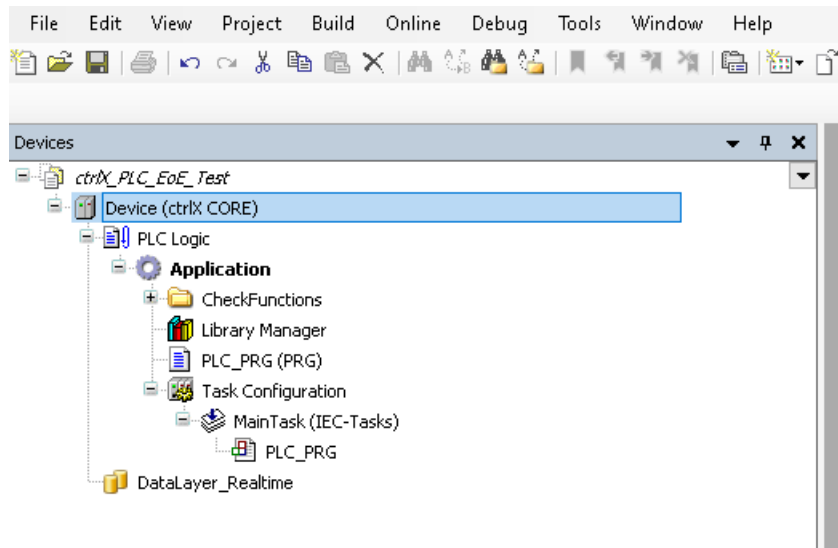


First add SAFEX-C12 to ctrlX IO project then transfer to CORE:



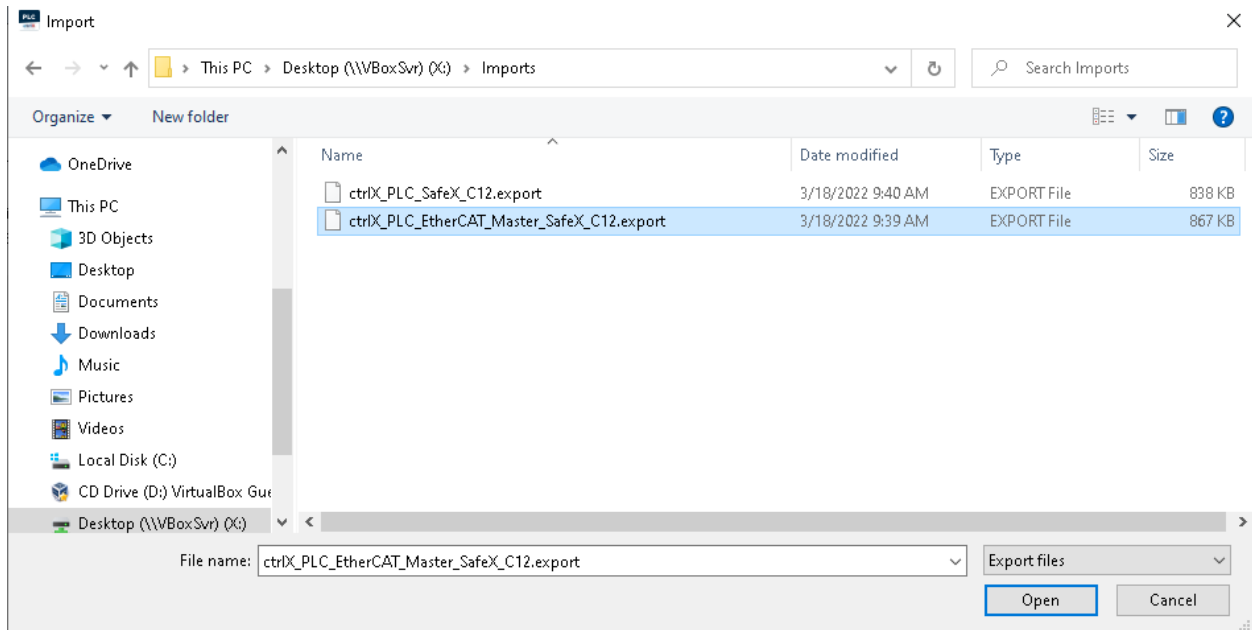
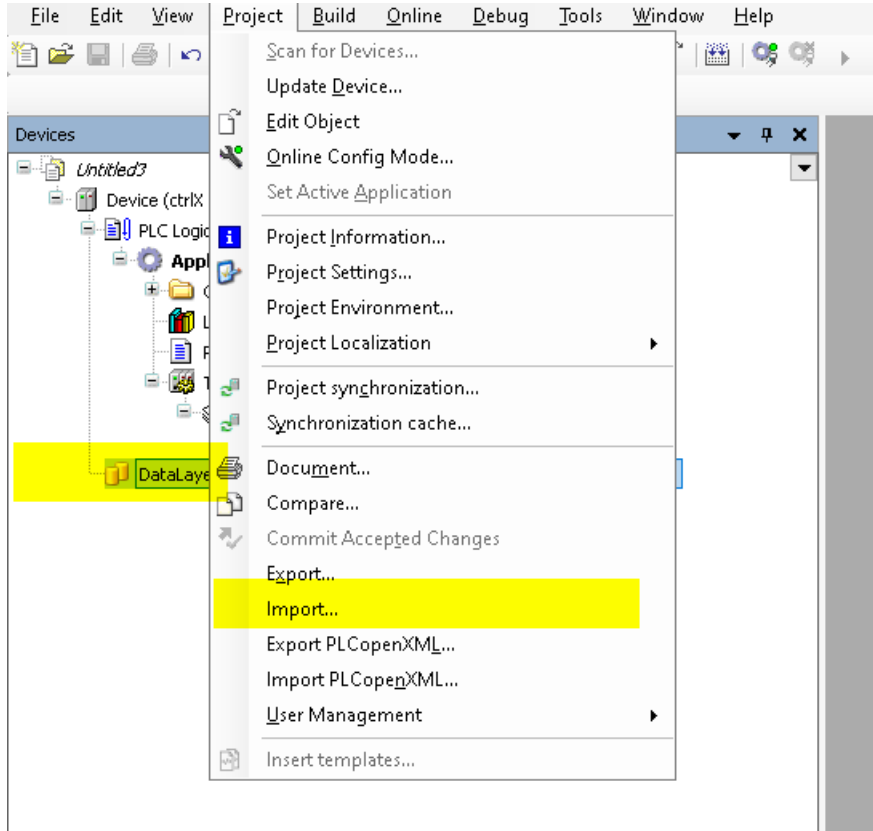
Next in PLC Engineering unzip the ctrlX_PLC_SafeX_C12.zip file. Be sure the ctrlX CORE has been added to the project:

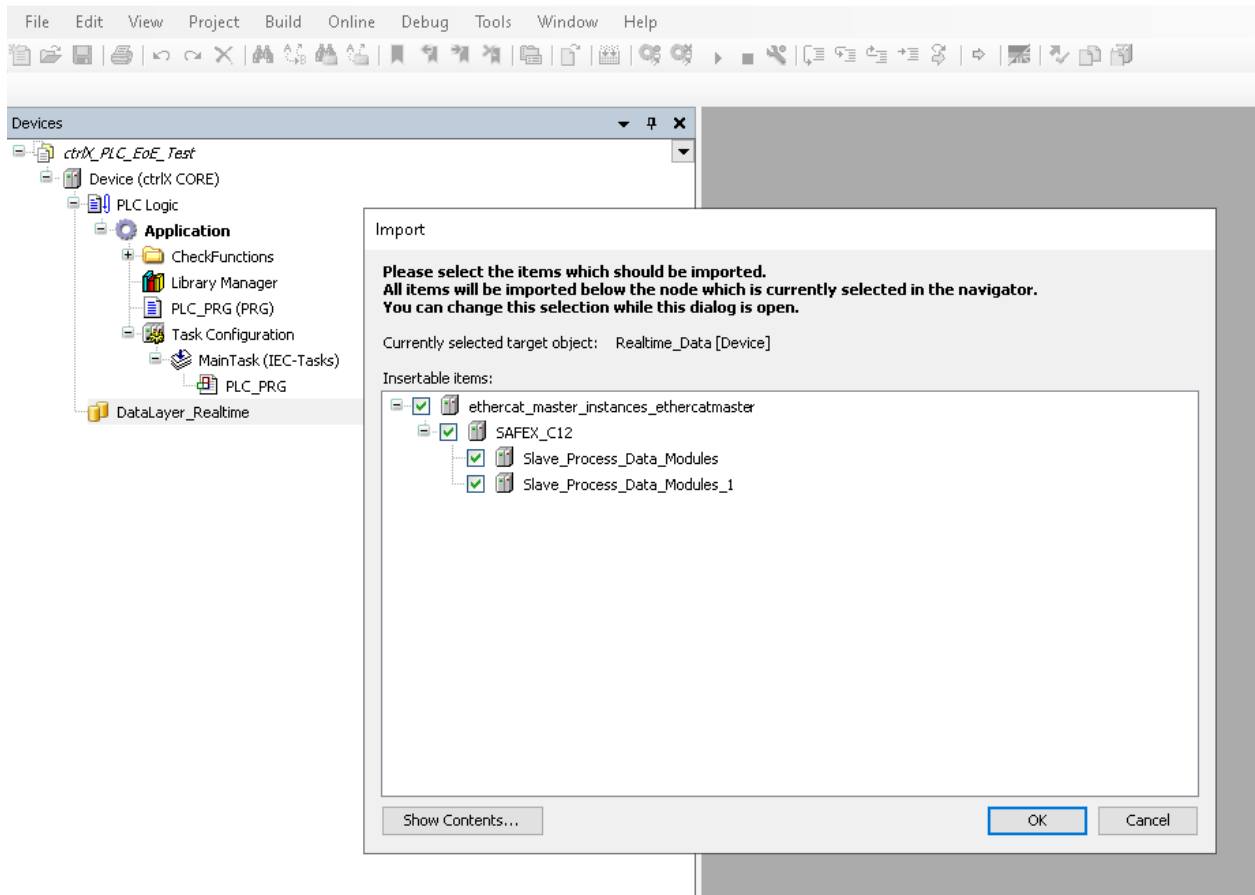


Import file with or without EtherCAT Master depending on if this element has already been imported from the CORE online data or not:

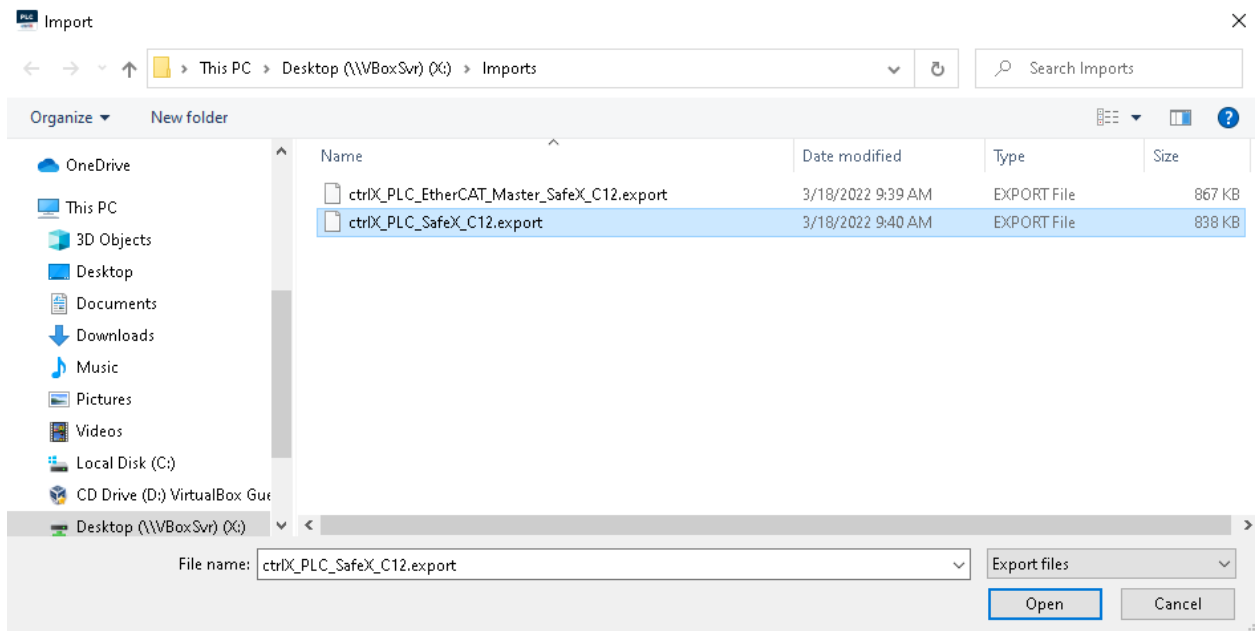
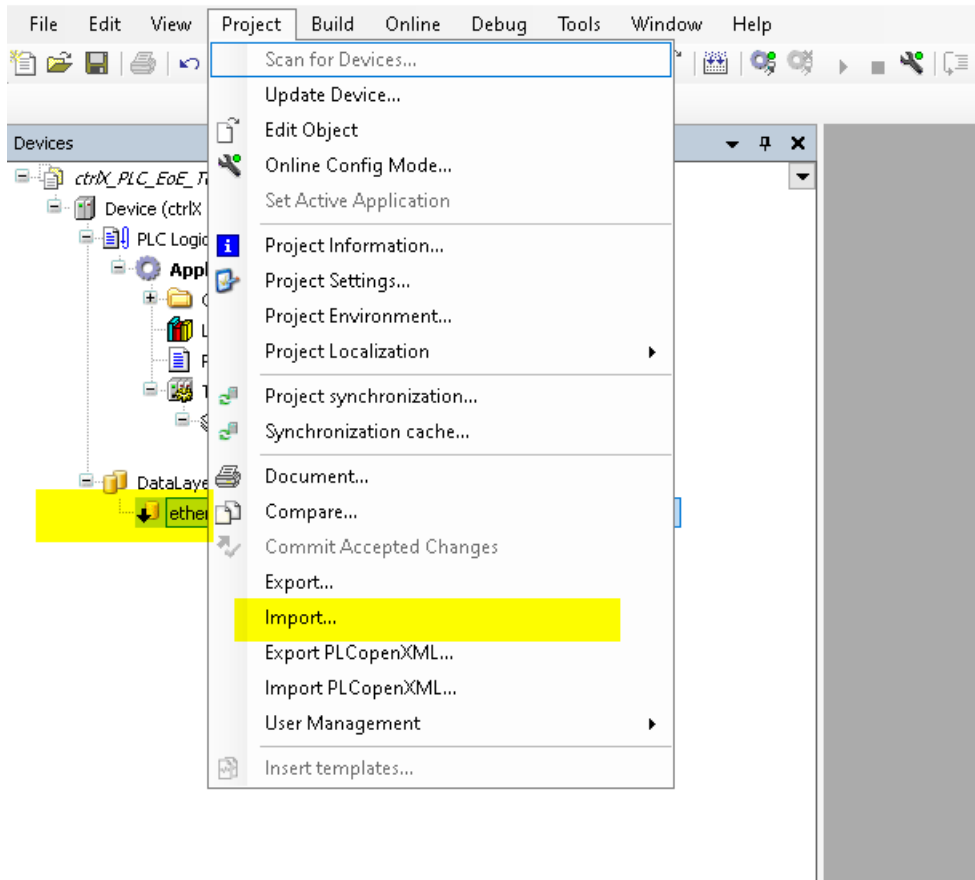
With EtherCAT Master:

Be sure to click on “DataLayer_Realtime” before selecting Import:





Without EtherCAT Master, be sure to click on “ethercat_master_instances_ethercatmaster” before selecting import:



Devices

- ctrIX_PLC_EoE_Test
 - Device (ctrIX CORE)
 - PLC Logic
 - Application
 - CheckFunctions
 - Library Manager
 - PLC_PRG (PRG)
 - Task Configuration
 - MainTask (IEC-Tasks)
 - PLC_PRG
 - DataLayer_Realtime
 - ethercat_master_instances_ether

Import

Please select the items which should be imported.
All items will be imported below the node which is currently selected in the navigator.
You can change this selection while this dialog is open.

Currently selected target object: ethercat_master_instances_ethercatmaster [Device: Realtime_Data]

Insertable items:

- SAFEX_C12
 - Slave_Process_Data_Modules
 - Slave_Process_Data_Modules_1

Show Contents... OK Cancel

SAFEX-C12 is added to the PLC Engineering project and can be downloaded to CORE by login:

