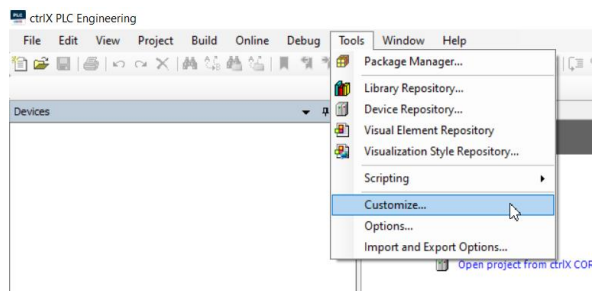


Quick start guide: How to enable CoDeSys licensing using ctrlX PLC Engineering

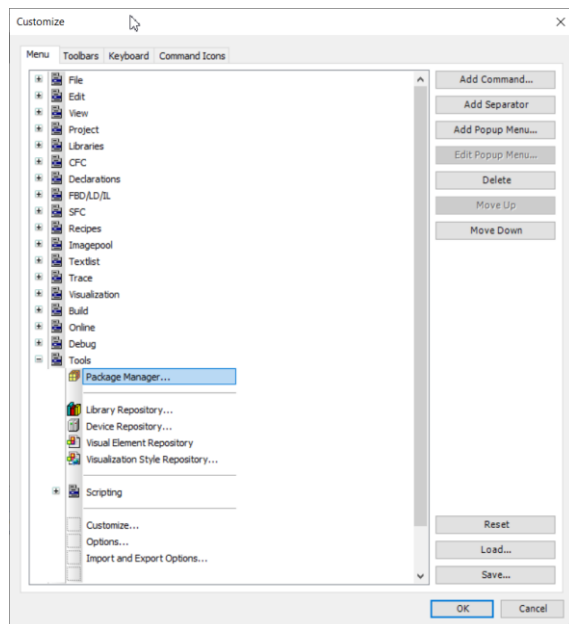
Step 1: Select menu *Tools->Customize* and confirm by pressing right mouse click



Step 2: Select position where to add the licensing menus

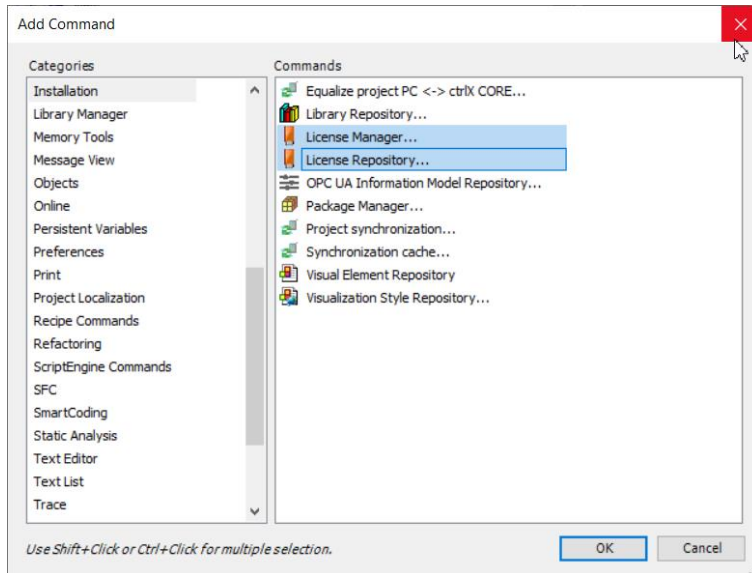
The dialogue *Customize* allows to modify the main menu of ctrlX PLC Engineering. The user is able to customize the menu structure and to add or remove commands.

Open node tools and select sub node *Package Manager*. Then press button *Add Command ...*



Step 3: Add the licensing menus

The dialogue *Add Command* lists all the available commands within ctrlX PLC Engineering by categories. At first select category *Installation* on the right list. On the left side all the corresponding commands are shown. Mark commands *License Manager* and *License Repository* and confirm selection by pressing button *OK*.



Step 4: Confirmation

Confirm the new menu structure by pressing button *OK* of the dialogue *Customize*. The configured commands are available now.

